

Multi branch selector  
for VRV IV heat recovery  
Air Conditioning  
Technical Data  
BS-Q14AV1B



BS4Q14AV1B  
BS6Q14AV1B  
BS8Q14AV1B  
BS10Q14AV1B  
BS12Q14AV1B  
BS16Q14AV1B



# TABLE OF CONTENTS

# BS-Q14AV1B

---

1	Features	4
	BS-Q14AV1B	4
2	Specifications	5
3	Safety device settings	6
4	Options	7
5	Dimensional drawings	8
6	Centre of gravity	13
7	Piping diagrams	16
8	Wiring diagrams	22
	Wiring Diagrams - Single Phase	22
9	Sound data	24
	Sound Pressure Spectrum	24

# 1 Features

## 1 - 1 BS-Q14AV1B

- › Unique range of single and multi BS boxes for flexible and fast design
- › Major reduction in installation time thanks to wide range, compact size and light weight multi BS boxes
- › Up to 70% smaller and 66% lighter than previous series
- › Faster installation thanks to a reduced number of brazing points and wiring
- › All indoor units connectable to one BS box
- › Less inspection ports needed compared to installing single BS boxes
- › Up to 16kW capacity available per port
- › Connect up to 250 class unit (28kW) by combining 2 ports
- › No limit on unused ports allowing phased installation
- › Faster installation thanks to open port connection
- › Allows multi tenant applications
- › Connectable to REYQ-T, RQCEQ-P3 and RWEYQ-T8 heat recovery units



## 2 Specifications

### 2 - 1 Specifications

Technical specifications					BS4Q14AV1B	BS6Q14AV1B	BS8Q14AV1B	BS10Q14AV1B	BS12Q14AV1B	BS16Q14AV1B	
Maximum capacity index of connectable indoor units					400	600	750				
Maximum capacity index of connectable indoor units per branch					140						
Number of branches					4	6	8	10	12	16	
Maximum number of connectable indoor units					20	30	40	50	60	64	
Maximum number of connectable indoor units per branch					5						
Casing Material					Galvanised steel plate						
Dimensions	Unit	Height	mm	298							
		Width	mm	370	580		820		1,060		
		Depth	mm	430							
Weight	Unit	kg	17.0	24.0	26.0	35.0	38.0	50.0			
PED					art. 4.3						
Piping connections	Outdoor unit	Liquid	OD	mm	9.5	12.7	12.7 (1) / 15.9	15.9	15.9 (1) / 19.1		
		Gas	OD	mm	22.2 (1) / 19.1	28.6 (1) / 22.2	28.6	28.6 (1) / 34.9			
		Dis-charge gas	OD	mm	19.1 (1) / 15.9	19.1 (1) / 22.2	19.1 (1) / 22.2 (1) / 28.6	28.6			
	Indoor unit	Liquid	OD	mm	6.4 (2) / 9.5 (3)						
		Gas	OD	mm	12.7 (2) / 15.9 (3)						
Sound absorbing thermal insulation					Urethane foam, polyethylene foam						

Standard accessories: Accessory pipe;Quantity: 1;

Standard accessories: Clamps;Quantity: 1;

Standard accessories: Insulation tube;Quantity: 1;

Standard accessories: Metal clamp for drain hose;Quantity: 1;

Standard accessories: Sealing material;Quantity: 1;

Standard accessories: Stopper pipes;Quantity: 1;

Standard accessories: Insulation tube for stopper pipes;Quantity: 1;

Electrical specifications					BS4Q14AV1B	BS6Q14AV1B	BS8Q14AV1B	BS10Q14AV1B	BS12Q14AV1B	BS16Q14AV1B
Power supply	Phase	1~								
	Frequency	Hz	50							
	Voltage	V	220-240							
	Minimum circuit amps (MCA)	A	0.4	0.6	0.8	1.0	1.2	1.6		
	Maximum fuse amps (MFA)	A	15							

(1)Diameter when using the attached reducer. If the joint does not fit, a reducer is requested (field supply). |

(2)When connecting indoor units smaller or equal to 50 class (no need to cut the outlet pipe) |

(3)When connecting indoor units larger or equal to 63 class (the outlet pipe needs to be cut) |

Insulators are necessary (field supply) for the triple piping side |

Maximum allowable voltage range variation between phases is 2%. |

MCA/MFA: MCA = 1.25 x FLA |

MFA ≤ 4 x FLA |

Next lower standard fuse rating minimum 15A |

Select wire size based on the value of MCA |

Voltage range: units are suitable for use on electrical systems where voltage supplied to unit terminal is not below or above listed range limits. |

Instead of a fuse, use a circuit breaker

### 3 Safety device settings

#### 3 - 1 Safety Device Settings

**3**
**BS-Q14AV1B**

Model	Safety devices
	PC board fuse
BS4Q14AV1	250V 3.15A
BS6Q14AV1	250V 3.15A
BS8Q14AV1	250V 3.15A
BS10Q14AV1	250V 3.15A
BS12Q14AV1	250V 3.15A
BS16Q14AV1	250V 3.15A
BS4Q14BVM	250V 3.15A
BS6Q14BVM	250V 3.15A
BS8Q14BVM	250V 3.15A
BS10Q14BVM	250V 3.15A
BS12Q14BVM	250V 3.15A
BS16Q14AVM	250V 3.15A

**4D086060A**

# 4 Options

## 4 - 1 Options

### BS-Q14AV1B

Option name	BS4Q14AV1B	BS6Q14AV1B	BS8Q14AV1B	BS10Q14AV1B	BS12Q14AV1B	BS16Q14AV1B
Closed pipe kit	KHFP26A100C					
Joint kit	KHRP26A250T					
Quiet kit	KDDN26A4	KDDN26A8		KDDN26A12		KDDN26A16
External control adapter for outdoor units	-					
Adapter for multi tenant	-					

#### NOTES

1. Revision mark should be te latest.

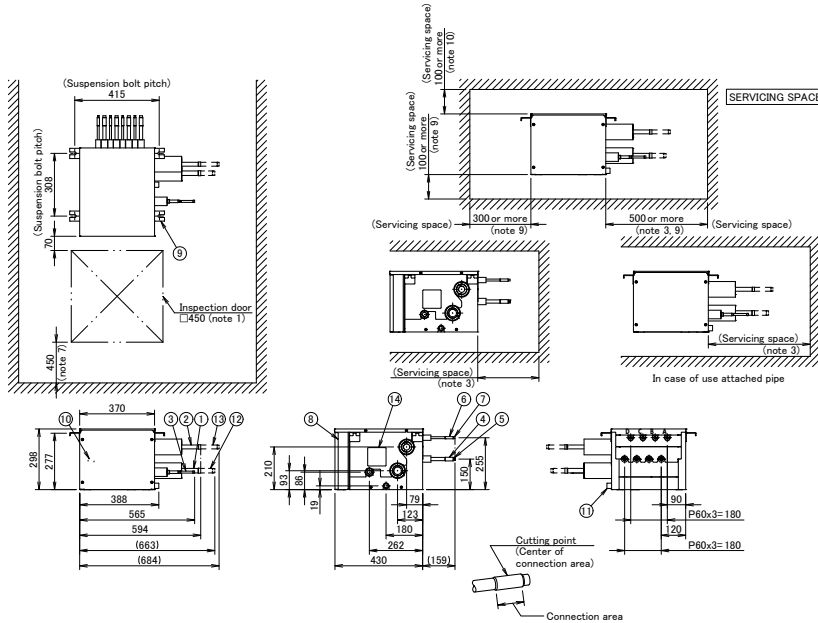
**3D087639B**

# 5 Dimensional drawings

## 5 - 1 Dimensional Drawings

5

BS4Q14AV1B



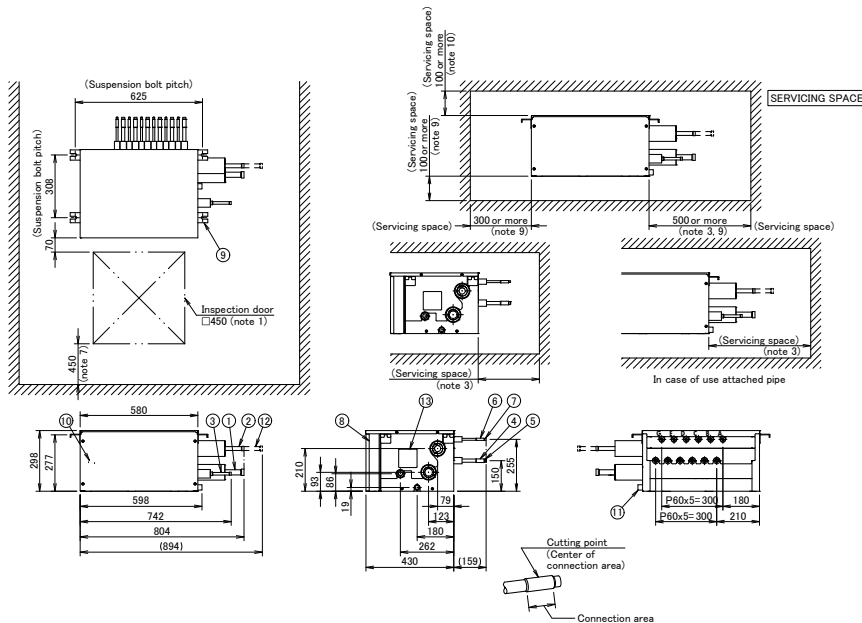
NOTES:

- BE SURE TO INSTALL AN INSPECTION DOOR AT ELECTRIC BOX SIDE. ANOTHER DOOR IS NECESSARY TO UNLOAD THE PRODUCT.
- INSTALL THE BS BOX ON A LOCATION WHERE THE REFRIGERANT NOISE CANNOT DISTURB THE ROOM OCCUPANTS.
  - TO AVOID THAT REFRIGERANT NOISE DISTURBS THE PEOPLE IN THE ROOM, KEEP AT LEAST 5m PIPING BETWEEN THE OCCUPIED ROOM AND THE BS BOX.
  - IF THERE IS NO FALSE CEILING AT THE ROOM, PLEASE ADD SOUND INSULATION AROUND THE PIPING BETWEEN BS BOX AND INDOOR UNIT, OR KEEP MUCH LONGER LENGTH BETWEEN BS BOX AND OCCUPIED ROOM.
- OCCUPY THE SPACE WHICH IS POSSIBLE TO INSTALL FIELD PIPES.
- IN CASE OF CONNECTION WITH A 20/50 TYPE INDOOR UNIT, THERE IS NO NEED TO CUT AND CONNECT AS IT IS.
  - IN CASE OF OTHERS, CUT THE OUTLET PIPE AND CONNECT TO THE CONNECTING PIPE. REFER TO FIGURE ABOVE.
- REDUCER MAY BE REQUIRED (FIELD SUPPLY) IF JOINT DIAMETER DOES NOT SUIT ON THE TRIPLE PIPING SIDE.
- INSULATORS ARE NECESSARY (FIELD SUPPLY) FOR THE TRIPLE PIPING SIDE.
- THIS SPACE IS A SPACE TO KEEP A TOP PANEL WHEN SERVICING.
- INSTALL IT IN A SPACE WHICH CAN BE SECURED DOWNWARDS SLOPE OF 1/100 OR MORE.
- IT IS A SPACE FOR REMOVING THE DRAIN PAN.
- THIS IS A SPACE FOR REMOVING A TOP PANEL WHEN SERVICING.

NUMBER	PART NAME	REMARK
1	OUTDOOR UNIT SUCTION GAS PIPE CONNECTION PORT (NOTE 5, 6)	Ø22.2mm BRAZING CONNECTION
2	OUTDOOR UNIT H/P GAS PIPE CONNECTION PORT (NOTE 5, 6)	Ø19.3mm BRAZING CONNECTION
3	OUTDOOR UNIT LIQUID PIPE CONNECTION PORT (NOTE 5, 6)	Ø19.5mm BRAZING CONNECTION
4	INDOOR UNIT GAS PIPE CONNECTION PORT (NOTE 4)	Ø15.9mm BRAZING CONNECTION
5	INDOOR UNIT GAS PIPE CONNECTION PORT (NOTE 4)	Ø12.7mm BRAZING CONNECTION
6	INDOOR UNIT LIQUID PIPE CONNECTION PORT (NOTE 4)	Ø19.5mm BRAZING CONNECTION
7	INDOOR UNIT LIQUID PIPE CONNECTION PORT (NOTE 4)	Ø5.4mm BRAZING CONNECTION
8	ELECTRIC BOX (NOTE 3)	
9	SUSPENSION BRACKETS	M8×M10
10	GROUNDING TERMINAL	M8
11	SOCKET FOR DRAIN	VP20 (O.D.Ø25mm / I.D.Ø20mm)
12	ATTACHED PIPE (NOTE 5, 6)	Ø19.3mm BRAZING CONNECTION
13	ATTACHED PIPE (NOTE 5, 6)	Ø15.9mm BRAZING CONNECTION
14	INSPECTION HOLE	

3D106407

BS6Q14AV1B



NOTES:

- BE SURE TO INSTALL AN INSPECTION DOOR AT ELECTRIC BOX SIDE. ANOTHER DOOR IS NECESSARY TO UNLOAD THE PRODUCT.
- INSTALL THE BS BOX ON A LOCATION WHERE THE REFRIGERANT NOISE CANNOT DISTURB THE ROOM OCCUPANTS.
  - TO AVOID THAT REFRIGERANT NOISE DISTURBS THE PEOPLE IN THE ROOM, KEEP AT LEAST 5m PIPING BETWEEN THE OCCUPIED ROOM AND THE BS BOX.
  - IF THERE IS NO FALSE CEILING AT THE ROOM, PLEASE ADD SOUND INSULATION AROUND THE PIPING BETWEEN BS BOX AND INDOOR UNIT, OR KEEP MUCH LONGER LENGTH BETWEEN BS BOX AND OCCUPIED ROOM.
- OCCUPY THE SPACE WHICH IS POSSIBLE TO INSTALL FIELD PIPES.
- IN CASE OF CONNECTION WITH A 20/50 TYPE INDOOR UNIT, THERE IS NO NEED TO CUT AND CONNECT AS IT IS.
  - IN CASE OF OTHERS, CUT THE OUTLET PIPE AND CONNECT TO THE CONNECTING PIPE. REFER TO FIGURE ABOVE.
- REDUCER MAY BE REQUIRED (FIELD SUPPLY) IF JOINT DIAMETER DOES NOT SUIT ON THE TRIPLE PIPING SIDE.
- INSULATORS ARE NECESSARY (FIELD SUPPLY) FOR THE TRIPLE PIPING SIDE.
- THIS SPACE IS A SPACE TO KEEP A TOP PANEL WHEN SERVICING.
- INSTALL IT IN A SPACE WHICH CAN BE SECURED DOWNWARDS SLOPE OF 1/100 OR MORE.
- IT IS A SPACE FOR REMOVING THE DRAIN PAN.
- THIS IS A SPACE FOR REMOVING A TOP PANEL WHEN SERVICING.

NUMBER	PART NAME	REMARK
1	OUTDOOR UNIT SUCTION GAS PIPE CONNECTION PORT (NOTE 5, 6)	Ø26.6mm BRAZING CONNECTION
2	OUTDOOR UNIT H/P GAS PIPE CONNECTION PORT (NOTE 5, 6)	Ø19.3mm BRAZING CONNECTION
3	OUTDOOR UNIT LIQUID PIPE CONNECTION PORT (NOTE 5, 6)	Ø12.7mm BRAZING CONNECTION
4	INDOOR UNIT GAS PIPE CONNECTION PORT (NOTE 4)	Ø15.9mm BRAZING CONNECTION
5	INDOOR UNIT GAS PIPE CONNECTION PORT (NOTE 4)	Ø12.7mm BRAZING CONNECTION
6	INDOOR UNIT LIQUID PIPE CONNECTION PORT (NOTE 4)	Ø19.5mm BRAZING CONNECTION
7	INDOOR UNIT LIQUID PIPE CONNECTION PORT (NOTE 4)	Ø5.4mm BRAZING CONNECTION
8	ELECTRIC BOX (NOTE 3)	
9	SUSPENSION BRACKETS	M8×M10
10	GROUNDING TERMINAL	M8
11	SOCKET FOR DRAIN	VP20 (O.D.Ø25mm / I.D.Ø20mm)
12	ATTACHED PIPE (NOTE 5, 6)	Ø22.2mm BRAZING CONNECTION
13	INSPECTION HOLE	

3D106408

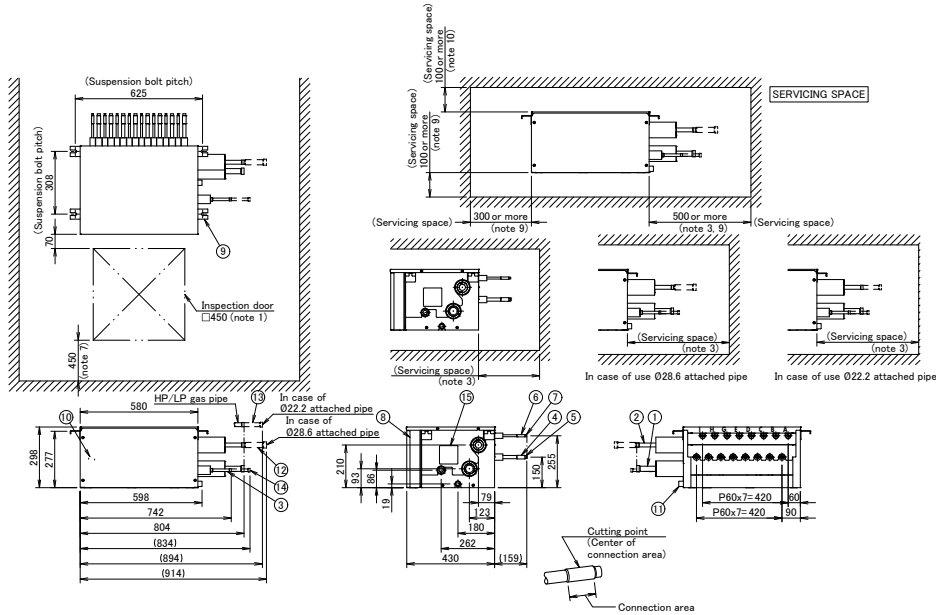
8



# 5 Dimensional drawings

## 5 - 1 Dimensional Drawings

### BS8Q14AV1B



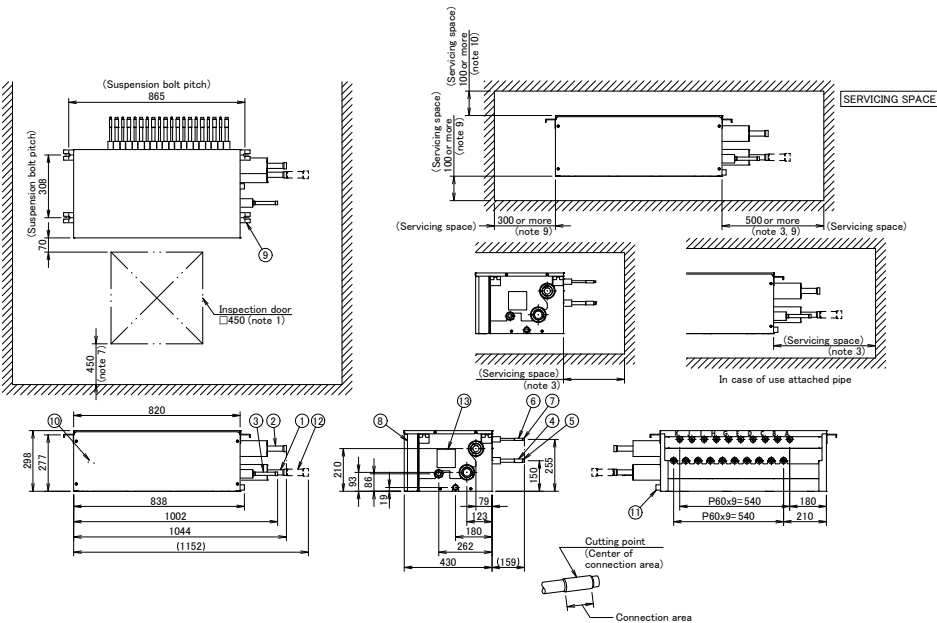
NOTES:

- BE SURE TO INSTALL AN INSPECTION DOOR AT ELECTRIC BOX SIDE. ANOTHER DOOR IS NECESSARY TO UNLOAD THE PRODUCT.
- INSTALL THE BS BOX ON A LOCATION WHERE THE REFRIGERANT NOISE CANNOT DISTURB THE ROOM OCCUPANTS.
  - TO AVOID THAT REFRIGERANT NOISE DISTURBS THE PEOPLE IN THE ROOM, KEEP AT LEAST 5m PIPING BETWEEN THE OCCUPIED ROOM AND THE BS BOX.
  - IF THERE IS NO FALSE CEILING AT THE ROOM, PLEASE ADD SOUND INSULATION AROUND THE PIPING BETWEEN BS BOX AND INDOOR UNIT, OR KEEP MUCH LONGER LENGTH BETWEEN BS BOX AND OCCUPIED ROOM.
- OCCUPY THE SPACE WHICH IS POSSIBLE TO INSTALL FIELD PIPES.
- IN CASE OF CONNECTION WITH A 20"50 TYPE INDOOR UNIT, THERE IS NO NEED TO CUT AND CONNECT AS IT IS. IN CASE OF OTHERS, CUT THE OUTLET PIPE AND CONNECT TO THE CONNECTING PIPE. REFER TO FIGURE ABOVE.
- REDUCER MAY BE REQUIRED (FIELD SUPPLY) IF JOINT DIAMETER DOES NOT SUIT ON THE TRIPLE PIPING SIDE.
- INSULATORS ARE NECESSARY (FIELD SUPPLY) FOR THE TRIPLE PIPING SIDE.
- THIS SPACE IS A SPACE TO KEEP A TOP PANEL WHEN SERVICING.
- INSTALL IT IN A SPACE WHICH CAN BE SECURED DOWNWARDS SLOPE OF 1/100 OR MORE.
- IT IS A SPACE FOR REMOVING THE DRAIN PAN.
- THIS IS A SPACE FOR REMOVING A TOP PANEL WHEN SERVICING.

NUMBER	PART NAME	REMARK
1	OUTDOOR UNIT SUCTION GAS PIPE CONNECTION PORT (NOTE 5, 6)	Ø28.6mm BRAZING CONNECTION
2	OUTDOOR UNIT HP/LP GAS PIPE CONNECTION PORT (NOTE 5, 6)	Ø19.3mm BRAZING CONNECTION
3	OUTDOOR UNIT LIQUID PIPE CONNECTION PORT (NOTE 5, 6)	Ø12.7mm BRAZING CONNECTION
4	INDOOR UNIT GAS PIPE CONNECTION PORT (NOTE 4)	Ø15.9mm BRAZING CONNECTION
5	INDOOR UNIT GAS PIPE CONNECTION PORT (NOTE 4)	Ø12.7mm BRAZING CONNECTION
6	INDOOR UNIT LIQUID PIPE CONNECTION PORT (NOTE 4)	Ø9.5mm BRAZING CONNECTION
7	INDOOR UNIT LIQUID PIPE CONNECTION PORT (NOTE 4)	Ø6.4mm BRAZING CONNECTION
8	ELECTRIC BOX (NOTE 1)	
9	SUSPENSION BRACKETS	M8-M10
10	GROUNDING TERMINAL	M4
11	SOCKET FOR DRAIN	VP20 (I.D. Ø26mm / L.D. Ø20mm)
12	ATTACHED PIPE (NOTE 5, 6)	Ø38.6mm BRAZING CONNECTION
13	ATTACHED PIPE (NOTE 5, 6)	Ø22.2mm BRAZING CONNECTION
14	ATTACHED PIPE (NOTE 5, 6)	Ø15.9mm BRAZING CONNECTION
15	INSPECTION HOLE	

3D106409

### BS10Q14AV1B



NOTES:

- BE SURE TO INSTALL AN INSPECTION DOOR AT ELECTRIC BOX SIDE. ANOTHER DOOR IS NECESSARY TO UNLOAD THE PRODUCT.
- INSTALL THE BS BOX ON A LOCATION WHERE THE REFRIGERANT NOISE CANNOT DISTURB THE ROOM OCCUPANTS.
  - TO AVOID THAT REFRIGERANT NOISE DISTURBS THE PEOPLE IN THE ROOM, KEEP AT LEAST 5m PIPING BETWEEN THE OCCUPIED ROOM AND THE BS BOX.
  - IF THERE IS NO FALSE CEILING AT THE ROOM, PLEASE ADD SOUND INSULATION AROUND THE PIPING BETWEEN BS BOX AND INDOOR UNIT, OR KEEP MUCH LONGER LENGTH BETWEEN BS BOX AND OCCUPIED ROOM.
- OCCUPY THE SPACE WHICH IS POSSIBLE TO INSTALL FIELD PIPES.
- IN CASE OF CONNECTION WITH A 20"50 TYPE INDOOR UNIT, THERE IS NO NEED TO CUT AND CONNECT AS IT IS. IN CASE OF OTHERS, CUT THE OUTLET PIPE AND CONNECT TO THE CONNECTING PIPE. REFER TO FIGURE ABOVE.
- REDUCER MAY BE REQUIRED (FIELD SUPPLY) IF JOINT DIAMETER DOES NOT SUIT ON THE TRIPLE PIPING SIDE.
- INSULATORS ARE NECESSARY (FIELD SUPPLY) FOR THE TRIPLE PIPING SIDE.
- THIS SPACE IS A SPACE TO KEEP A TOP PANEL WHEN SERVICING.
- INSTALL IT IN A SPACE WHICH CAN BE SECURED DOWNWARDS SLOPE OF 1/100 OR MORE.
- IT IS A SPACE FOR REMOVING THE DRAIN PAN.
- THIS IS A SPACE FOR REMOVING A TOP PANEL WHEN SERVICING.

NUMBER	PART NAME	REMARK
1	OUTDOOR UNIT SUCTION GAS PIPE CONNECTION PORT (NOTE 5, 6)	Ø28.6mm BRAZING CONNECTION
2	OUTDOOR UNIT HP/LP GAS PIPE CONNECTION PORT (NOTE 5, 6)	Ø28.6mm BRAZING CONNECTION
3	OUTDOOR UNIT LIQUID PIPE CONNECTION PORT (NOTE 5, 6)	Ø15.9mm BRAZING CONNECTION
4	INDOOR UNIT GAS PIPE CONNECTION PORT (NOTE 4)	Ø15.9mm BRAZING CONNECTION
5	INDOOR UNIT GAS PIPE CONNECTION PORT (NOTE 4)	Ø12.7mm BRAZING CONNECTION
6	INDOOR UNIT LIQUID PIPE CONNECTION PORT (NOTE 4)	Ø9.5mm BRAZING CONNECTION
7	INDOOR UNIT LIQUID PIPE CONNECTION PORT (NOTE 4)	Ø6.4mm BRAZING CONNECTION
8	ELECTRIC BOX (NOTE 1)	
9	SUSPENSION BRACKETS	M8-M10
10	GROUNDING TERMINAL	M4
11	SOCKET FOR DRAIN	VP20 (I.D. Ø26mm / L.D. Ø20mm)
12	ATTACHED PIPE (NOTE 5, 6)	Ø34.9mm BRAZING CONNECTION
13	INSPECTION HOLE	

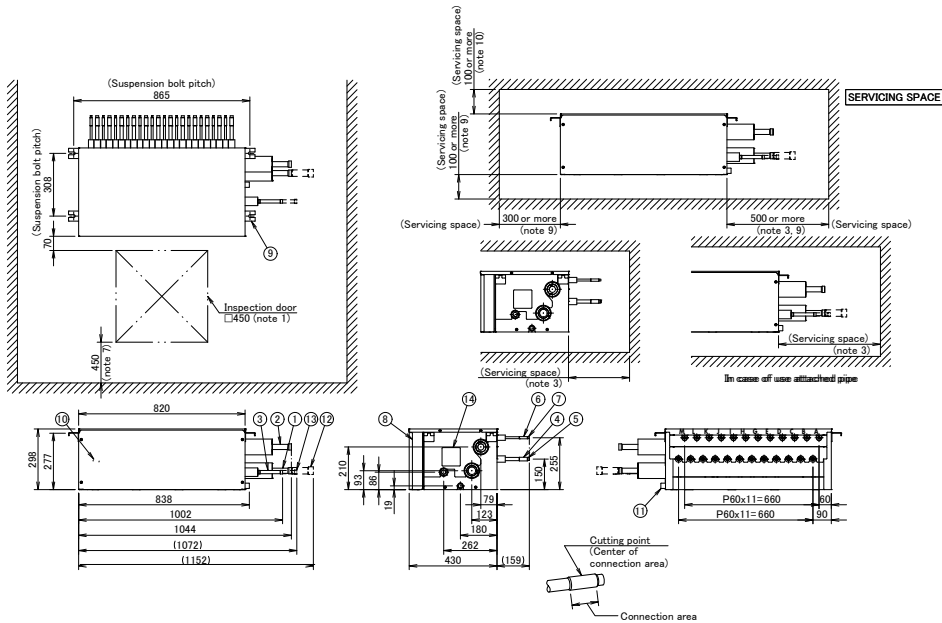
3D106410

# 5 Dimensional drawings

## 5 - 1 Dimensional Drawings

5

**BS12Q14AV1B**



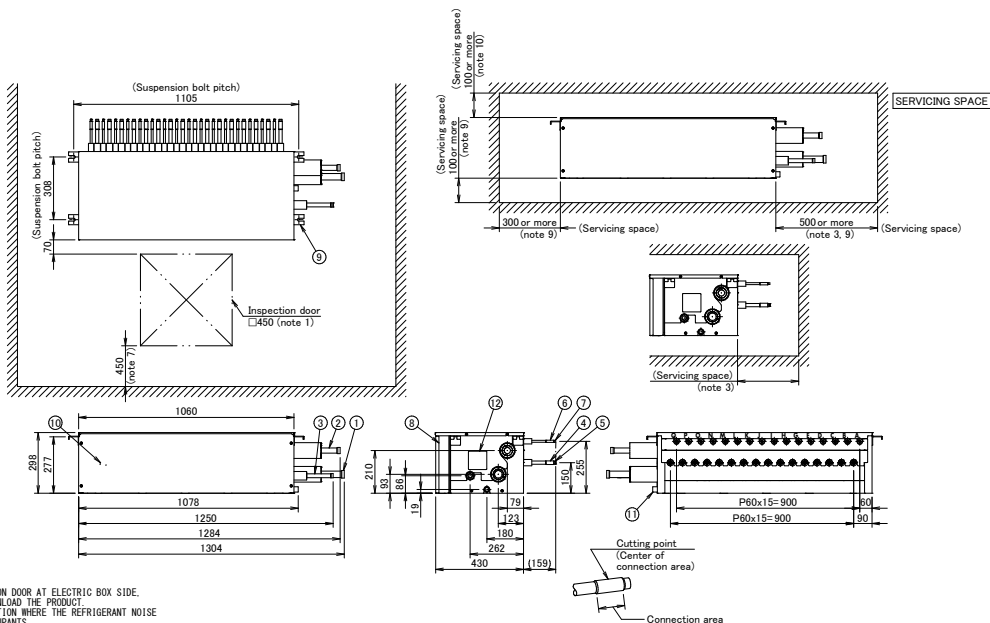
**NOTES:**

- BE SURE TO INSTALL AN INSPECTION DOOR AT ELECTRIC BOX SIDE. ANOTHER DOOR IS NECESSARY TO UNLOAD THE PRODUCT.
- INSTALL THE BS BOX ON A LOCATION WHERE THE REFRIGERANT NOISE CANNOT DISTURBE THE ROOM OCCUPANTS.
  - TO AVOID THAT REFRIGERANT NOISE DISTURBS THE PEOPLE IN THE ROOM, KEEP AT LEAST 5m PIPING BETWEEN THE OCCUPIED ROOM AND THE BS BOX.
  - IF THERE IS NO FALSE CEILING AT THE ROOM, PLEASE ADD SOUND INSULATION AROUND THE PIPING BETWEEN BS BOX AND INDOOR UNIT, OR KEEP MUCH LONGER LENGTH BETWEEN BS BOX AND OCCUPIED ROOM.
- OCCUPY THE SPACE WHICH IS POSSIBLE TO INSTALL FIELD PIPES.
- IN CASE OF CONNECTION WITH A 20/50 TYPE INDOOR UNIT, THERE IS NO NEED TO CUT AND CONNECT AS IT IS.
- IN CASE OF OTHERS, CUT THE OUTLET PIPE AND CONNECT TO THE CONNECTING PIPE. REFER TO FIGURE ABOVE.
- REDUCER MAY BE REQUIRED (FIELD SUPPLY) IF JOINT DIAMETER DOES NOT SUIT ON THE TRIPLE PIPING SIDE.
- INSULATORS ARE NECESSARY (FIELD SUPPLY) FOR THE TRIPLE PIPING SIDE.
- THIS SPACE IS A SPACE TO KEEP A TOP PANEL WHEN SERVICING.
- INSTALL IT IN A SPACE WHICH CAN BE SECURED DOWNWARDS SLOPE OF 1/100 OR MORE.
- IT IS A SPACE FOR REMOVING THE DRAIN PAN.
- THIS IS A SPACE FOR REMOVING A TOP PANEL WHEN SERVICING.

NUMBER	PART NAME	REMARK
1	OUTDOOR UNIT SUCTION GAS PIPE CONNECTION PORT (NOTE 5, 6)	Ø28.6mm BRAZING CONNECTION
2	OUTDOOR UNIT HP/LP GAS PIPE CONNECTION PORT (NOTE 5, 6)	Ø28.6mm BRAZING CONNECTION
3	OUTDOOR UNIT LIQUID PIPE CONNECTION PORT (NOTE 5, 6)	Ø15.9mm BRAZING CONNECTION
4	INDOOR UNIT GAS PIPE CONNECTION PORT (NOTE 4)	Ø25.9mm BRAZING CONNECTION
5	INDOOR UNIT GAS PIPE CONNECTION PORT (NOTE 4)	Ø12.7mm BRAZING CONNECTION
6	INDOOR UNIT LIQUID PIPE CONNECTION PORT (NOTE 4)	Ø9.5mm BRAZING CONNECTION
7	INDOOR UNIT LIQUID PIPE CONNECTION PORT (NOTE 4)	Ø5.4mm BRAZING CONNECTION
8	ELECTRIC BOX (NOTE 3)	
9	SUSPENSION BRACKETS	M8*10
10	GROUNDING TERMINAL	M4
11	SOCKET FOR DRAIN	VP21 (D:Ø29mm / L:Ø30mm)
12	ATTACHED PIPE (NOTE 5, 6)	Ø34.9mm BRAZING CONNECTION
13	ATTACHED PIPE (NOTE 5, 6)	Ø19.3mm BRAZING CONNECTION
14	INSPECTION HOLE	

3D106411

**BS16Q14AV1B**



**NOTES:**

- BE SURE TO INSTALL AN INSPECTION DOOR AT ELECTRIC BOX SIDE. ANOTHER DOOR IS NECESSARY TO UNLOAD THE PRODUCT.
- INSTALL THE BS BOX ON A LOCATION WHERE THE REFRIGERANT NOISE CANNOT DISTURBE THE ROOM OCCUPANTS.
  - TO AVOID THAT REFRIGERANT NOISE DISTURBS THE PEOPLE IN THE ROOM, KEEP AT LEAST 5m PIPING BETWEEN THE OCCUPIED ROOM AND THE BS BOX.
  - IF THERE IS NO FALSE CEILING AT THE ROOM, PLEASE ADD SOUND INSULATION AROUND THE PIPING BETWEEN BS BOX AND INDOOR UNIT, OR KEEP MUCH LONGER LENGTH BETWEEN BS BOX AND OCCUPIED ROOM.
- OCCUPY THE SPACE WHICH IS POSSIBLE TO INSTALL FIELD PIPES.
- IN CASE OF CONNECTION WITH A 20/50 TYPE INDOOR UNIT, THERE IS NO NEED TO CUT AND CONNECT AS IT IS.
- IN CASE OF OTHERS, CUT THE OUTLET PIPE AND CONNECT TO THE CONNECTING PIPE. REFER TO FIGURE ABOVE.
- REDUCER MAY BE REQUIRED (FIELD SUPPLY) IF JOINT DIAMETER DOES NOT SUIT ON THE TRIPLE PIPING SIDE.
- INSULATORS ARE NECESSARY (FIELD SUPPLY) FOR THE TRIPLE PIPING SIDE.
- THIS SPACE IS A SPACE TO KEEP A TOP PANEL WHEN SERVICING.
- INSTALL IT IN A SPACE WHICH CAN BE SECURED DOWNWARDS SLOPE OF 1/100 OR MORE.
- IT IS A SPACE FOR REMOVING THE DRAIN PAN.
- THIS IS A SPACE FOR REMOVING A TOP PANEL WHEN SERVICING.

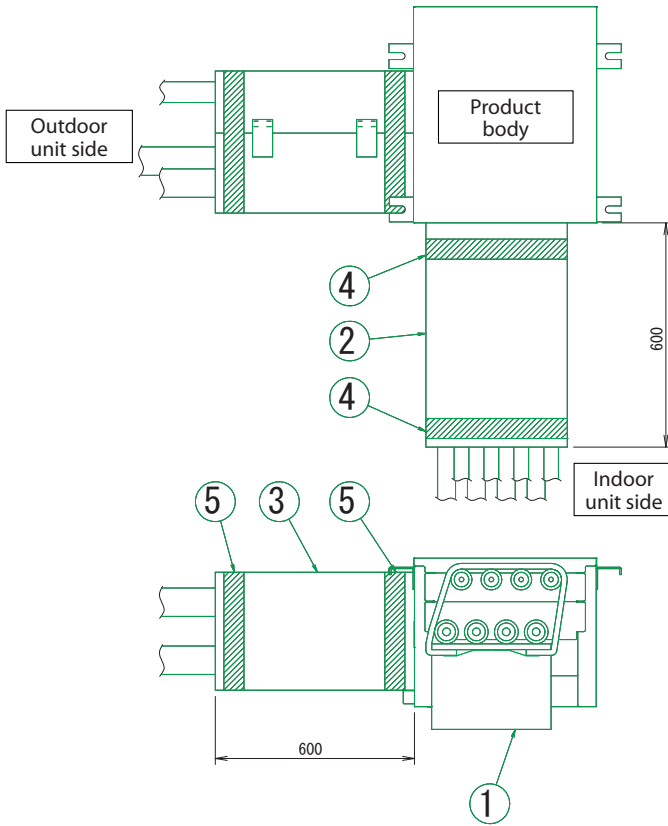
NUMBER	PART NAME	REMARK
1	OUTDOOR UNIT SUCTION GAS PIPE CONNECTION PORT (NOTE 5, 6)	Ø34.9mm BRAZING CONNECTION
2	OUTDOOR UNIT HP/LP GAS PIPE CONNECTION PORT (NOTE 5, 6)	Ø28.6mm BRAZING CONNECTION
3	OUTDOOR UNIT LIQUID PIPE CONNECTION PORT (NOTE 5, 6)	Ø15.9mm BRAZING CONNECTION
4	INDOOR UNIT GAS PIPE CONNECTION PORT (NOTE 4)	Ø25.9mm BRAZING CONNECTION
5	INDOOR UNIT GAS PIPE CONNECTION PORT (NOTE 4)	Ø12.7mm BRAZING CONNECTION
6	INDOOR UNIT LIQUID PIPE CONNECTION PORT (NOTE 4)	Ø9.5mm BRAZING CONNECTION
7	INDOOR UNIT LIQUID PIPE CONNECTION PORT (NOTE 4)	Ø5.4mm BRAZING CONNECTION
8	ELECTRIC BOX (NOTE 3)	
9	SUSPENSION BRACKETS	M8*10
10	GROUNDING TERMINAL	M4
11	SOCKET FOR DRAIN	VP21 (D:Ø29mm / L:Ø30mm)
12	INSPECTION HOLE	

3D106412

# 5 Dimensional drawings

## 5 - 2 Dimensional Drawings with accessories

BS4Q14AV1B



Silencing effect	About 3 dBA
------------------	-------------

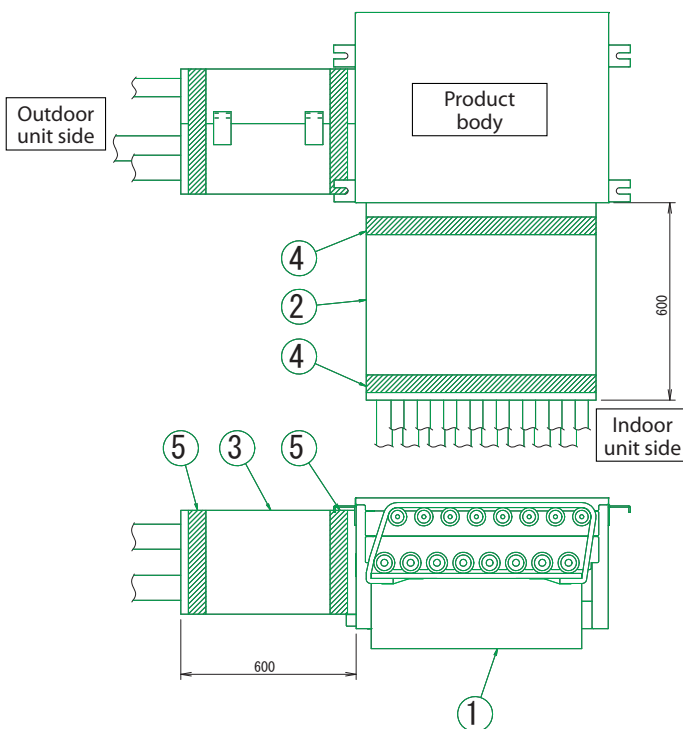
**NOTES**

1. Refrigerant passing sounds generated from the BS unit will decrease about 3dBA.
2. There is no silencing effect on propagation sound which occurs when the four-way selector valve of the outdoor unit is switched (For example, defrosting and switching cooling and heating.)
3. In some cases, the silencing effect is different from the displayed value due to environmental noise and sound reflection.
4. Both indoor and outdoor unit side, the length of straight pipe has to be 600mm or more. When less than 600mm, silencing effect will reduce.

No.	Part name	Remark
1	Sound insulation assy	For connection pipe (Indoor)
2	Sound insulation (1)	For connection pipe (Indoor)
3	Sound insulation (2)	For connection pipe (Outdoor)
4	Velcro	For connection pipe (Indoor)
5	Velcro	For connection pipe (Outdoor)

3D089585A

BS6-8Q14AV1B



Silencing effect	About 3 dBA
------------------	-------------

**NOTES**

1. Refrigerant passing sounds generated from the BS unit will decrease about 3dBA.
2. There is no silencing effect on propagation sound which occurs when the four-way selector valve of the outdoor unit is switched (For example, defrosting and switching cooling and heating.)
3. In some cases, the silencing effect is different from the displayed value due to environmental noise and sound reflection.
4. Both indoor and outdoor unit side, the length of straight pipe has to be 600mm or more. When less than 600mm, silencing effect will reduce.

No.	Part name	Remark
1	Sound insulation assy	For connection pipe (Indoor)
2	Sound insulation (1)	For connection pipe (Indoor)
3	Sound insulation (2)	For connection pipe (Outdoor)
4	Velcro	For connection pipe (Indoor)
5	Velcro	For connection pipe (Outdoor)

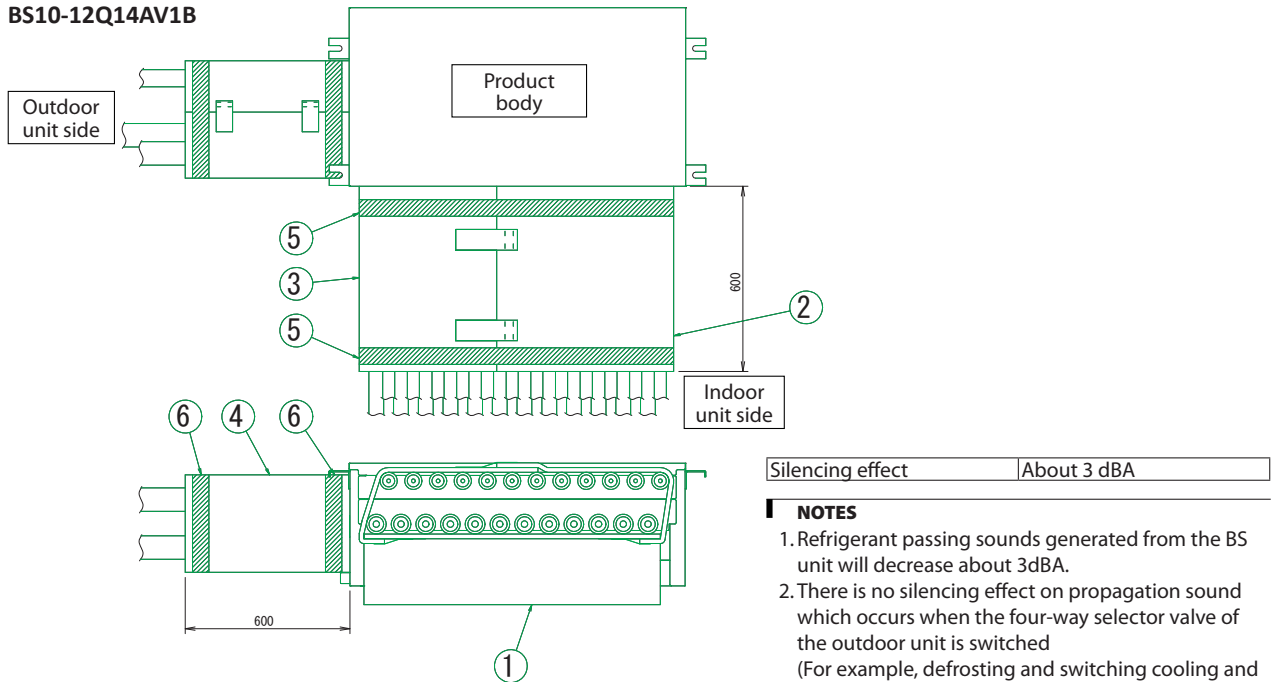
3D089586A

# 5 Dimensional drawings

## 5 - 2 Dimensional Drawings with accessories

5

BS10-12Q14AV1B



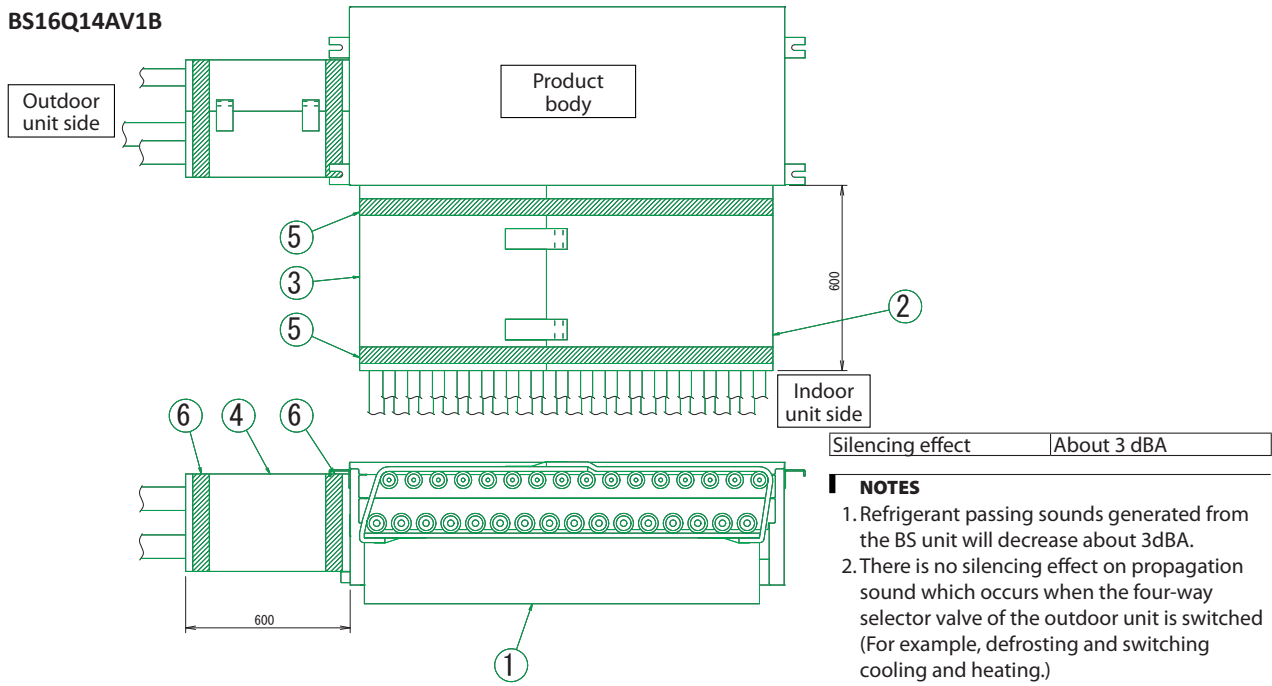
Silencing effect	About 3 dBA
------------------	-------------

- NOTES**
1. Refrigerant passing sounds generated from the BS unit will decrease about 3dBA.
  2. There is no silencing effect on propagation sound which occurs when the four-way selector valve of the outdoor unit is switched (For example, defrosting and switching cooling and heating.)
  3. In some cases, the silencing effect is different from the displayed value due to environmental noise and sound reflection.
  4. Both indoor and outdoor unit side, the length of straight pipe has to be 600mm or more. When less than 600mm, silencing effect will reduce.

**3D089587A**

No.	Part name	Remark
1	Sound insulation assy	For connection pipe (Indoor)
2	Sound insulation (1)	For connection pipe (Indoor)
3	Sound insulation (2)	For connection pipe (Indoor)
4	Sound insulation (3)	For connection pipe (Outdoor)
5	Velcro	For connection pipe (Indoor)
6	Velcro	For connection pipe (Outdoor)

BS16Q14AV1B



Silencing effect	About 3 dBA
------------------	-------------

- NOTES**
1. Refrigerant passing sounds generated from the BS unit will decrease about 3dBA.
  2. There is no silencing effect on propagation sound which occurs when the four-way selector valve of the outdoor unit is switched (For example, defrosting and switching cooling and heating.)
  3. In some cases, the silencing effect is different from the displayed value due to environmental noise and sound reflection.
  4. Both indoor and outdoor unit side, the length of straight pipe has to be 600mm or more. When less than 600mm, silencing effect will reduce.

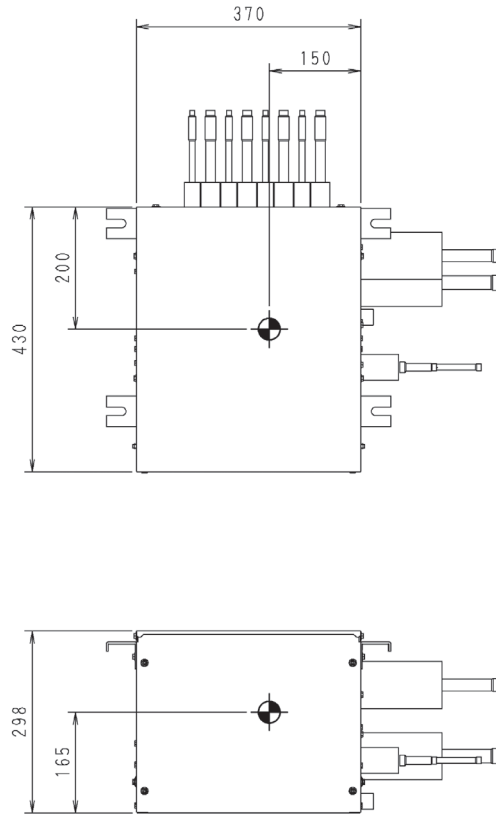
**3D089588A**

No.	Part name	Remark
1	Sound insulation assy	For connection pipe (Indoor)
2	Sound insulation (1)	For connection pipe (Indoor)
3	Sound insulation (2)	For connection pipe (Indoor)
4	Sound insulation (3)	For connection pipe (Outdoor)
5	Velcro	For connection pipe (Indoor)
6	Velcro	For connection pipe (Outdoor)

# 6 Centre of gravity

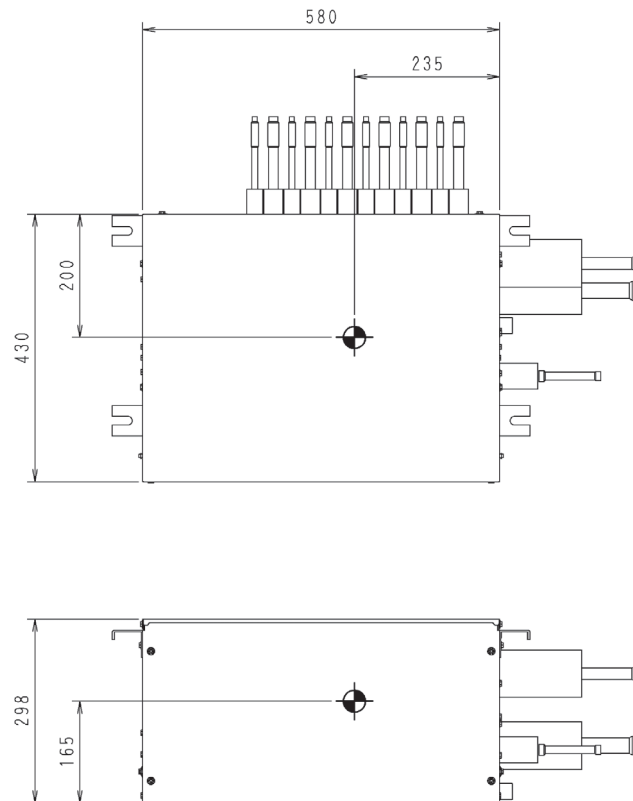
## 6 - 1 Centre of Gravity

BS4Q14AV1B



4D086046

BS6Q14AV1B



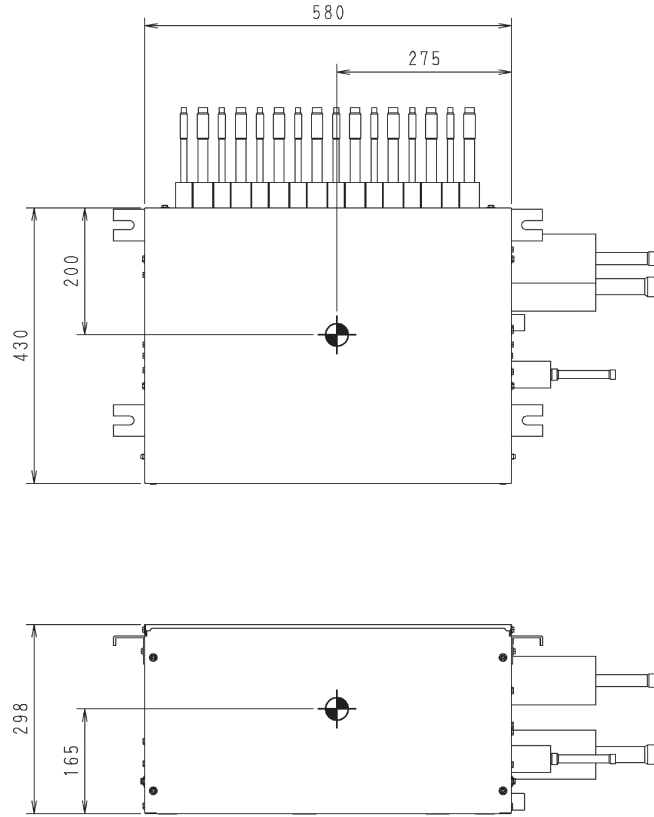
4D086047

# 6 Centre of gravity

## 6 - 1 Centre of Gravity

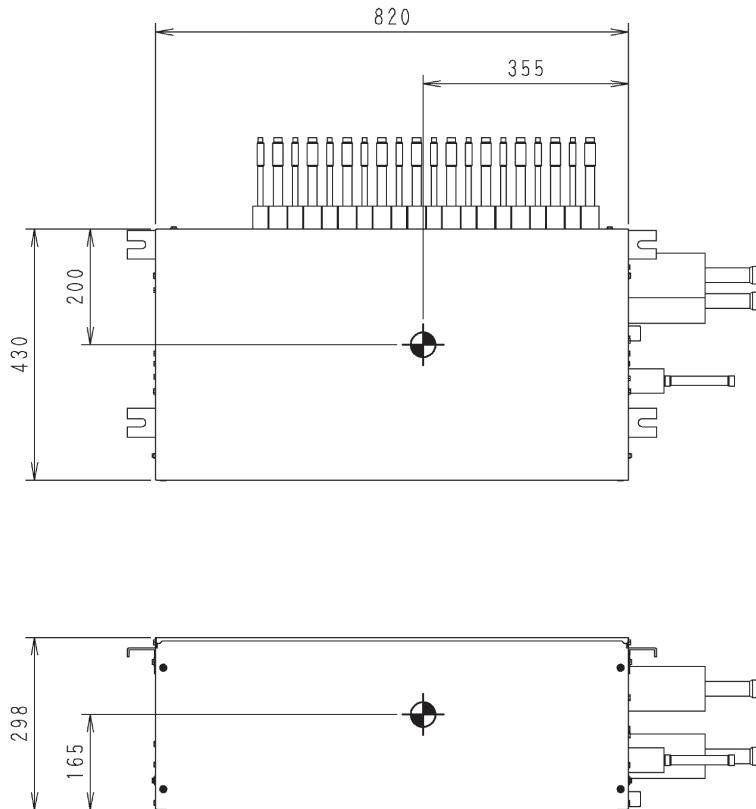
6

BS8Q14AV1B



4D086048

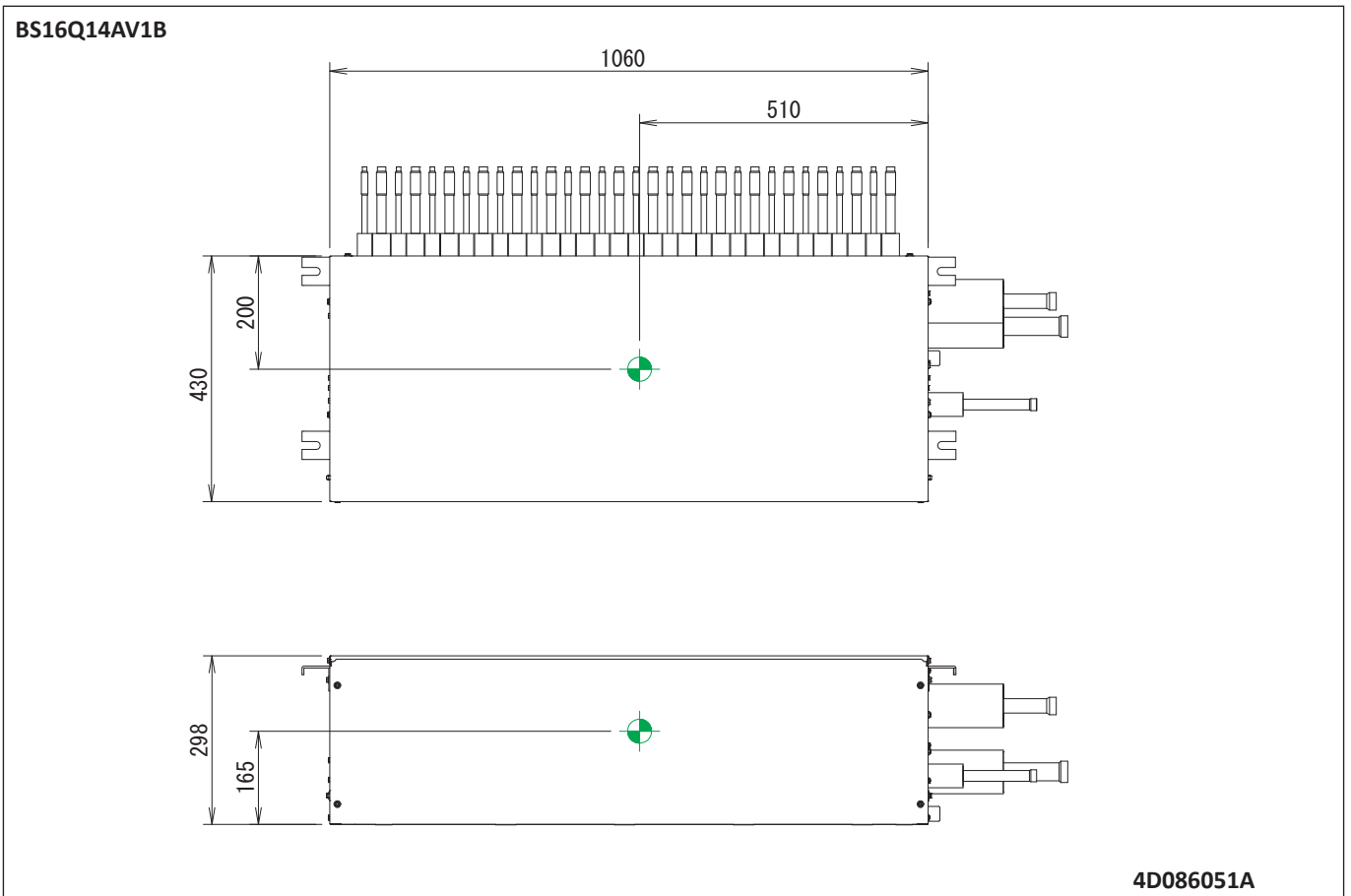
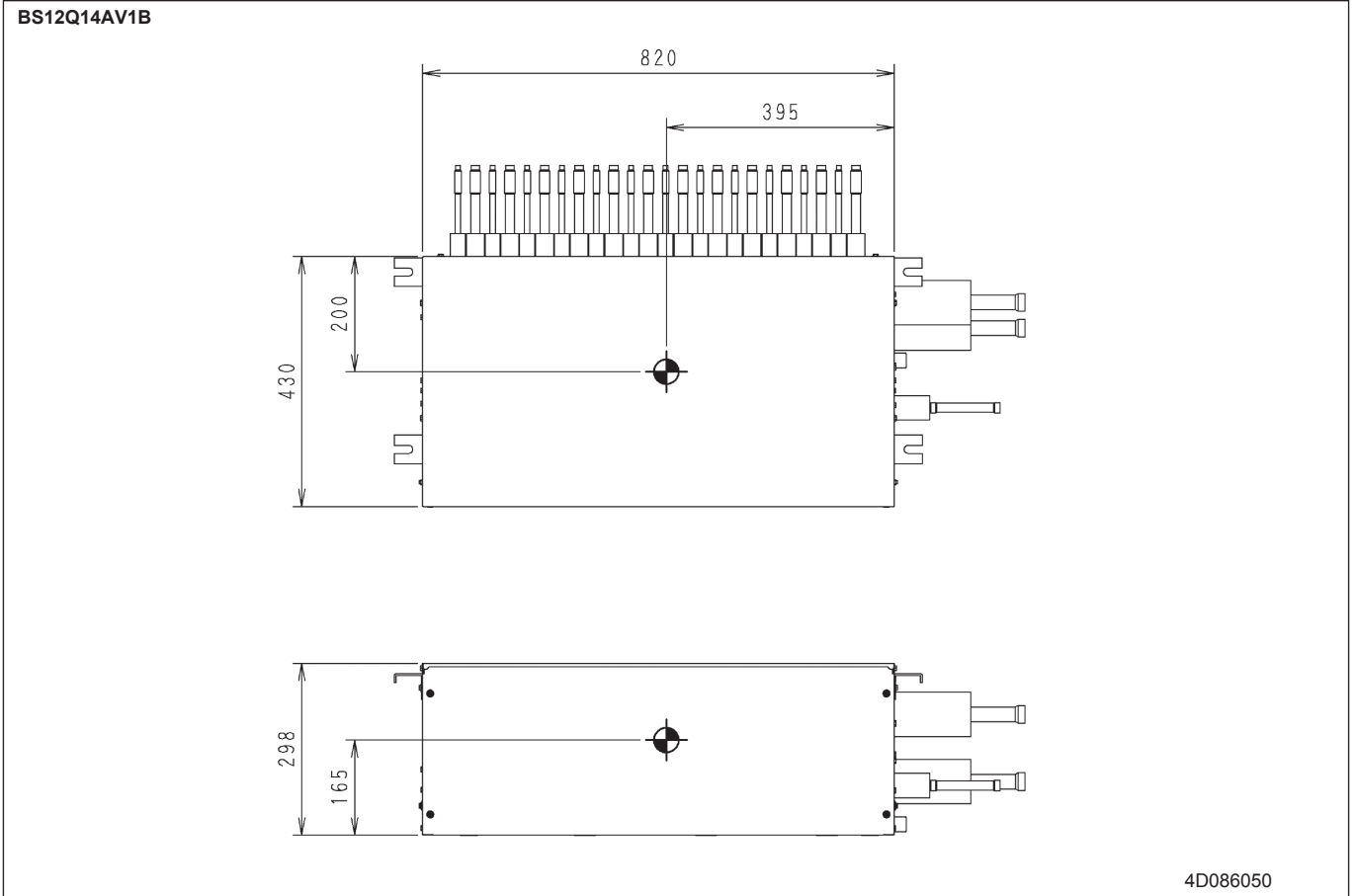
BS10Q14AV1B



4D086049

# 6 Centre of gravity

## 6 - 1 Centre of Gravity

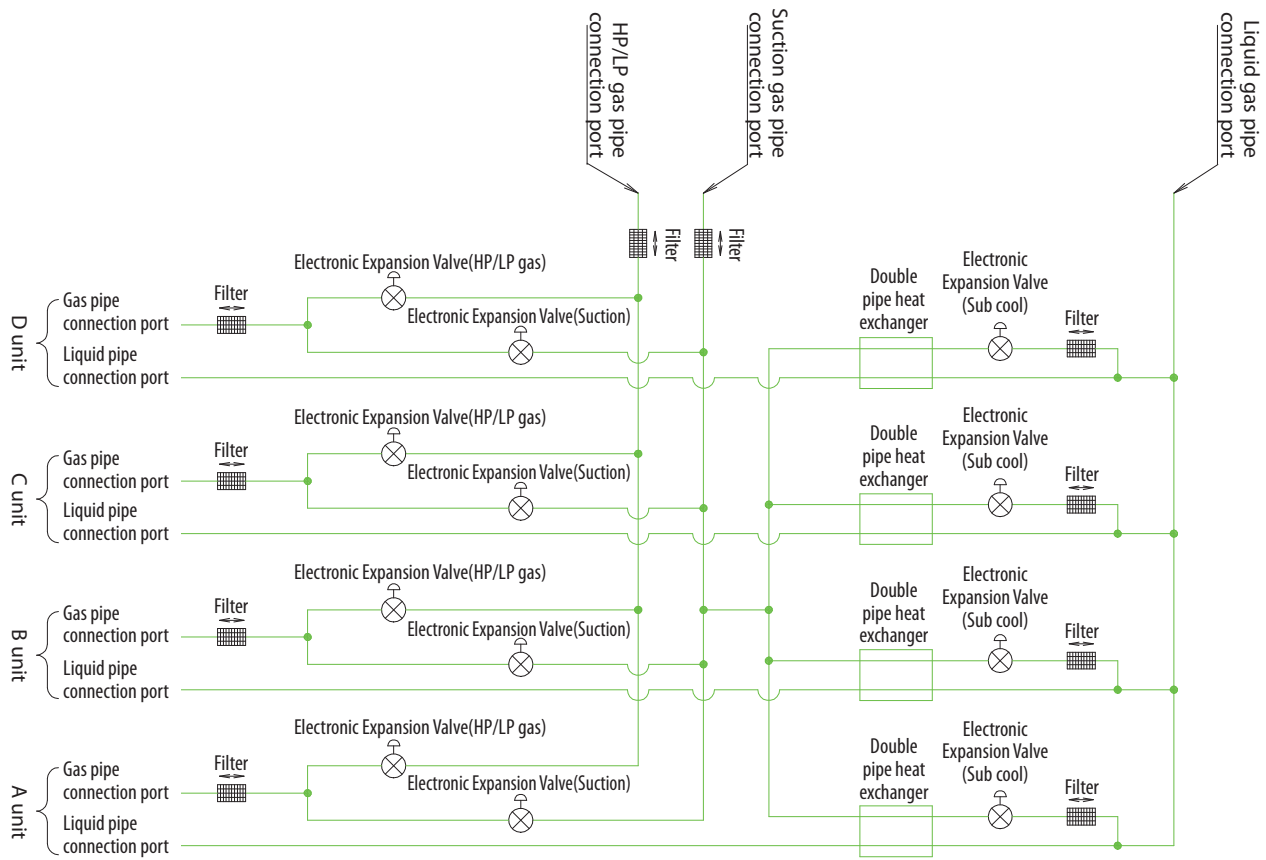


# 7 Piping diagrams

## 7 - 1 Piping Diagrams

7

BS4Q14AV1B

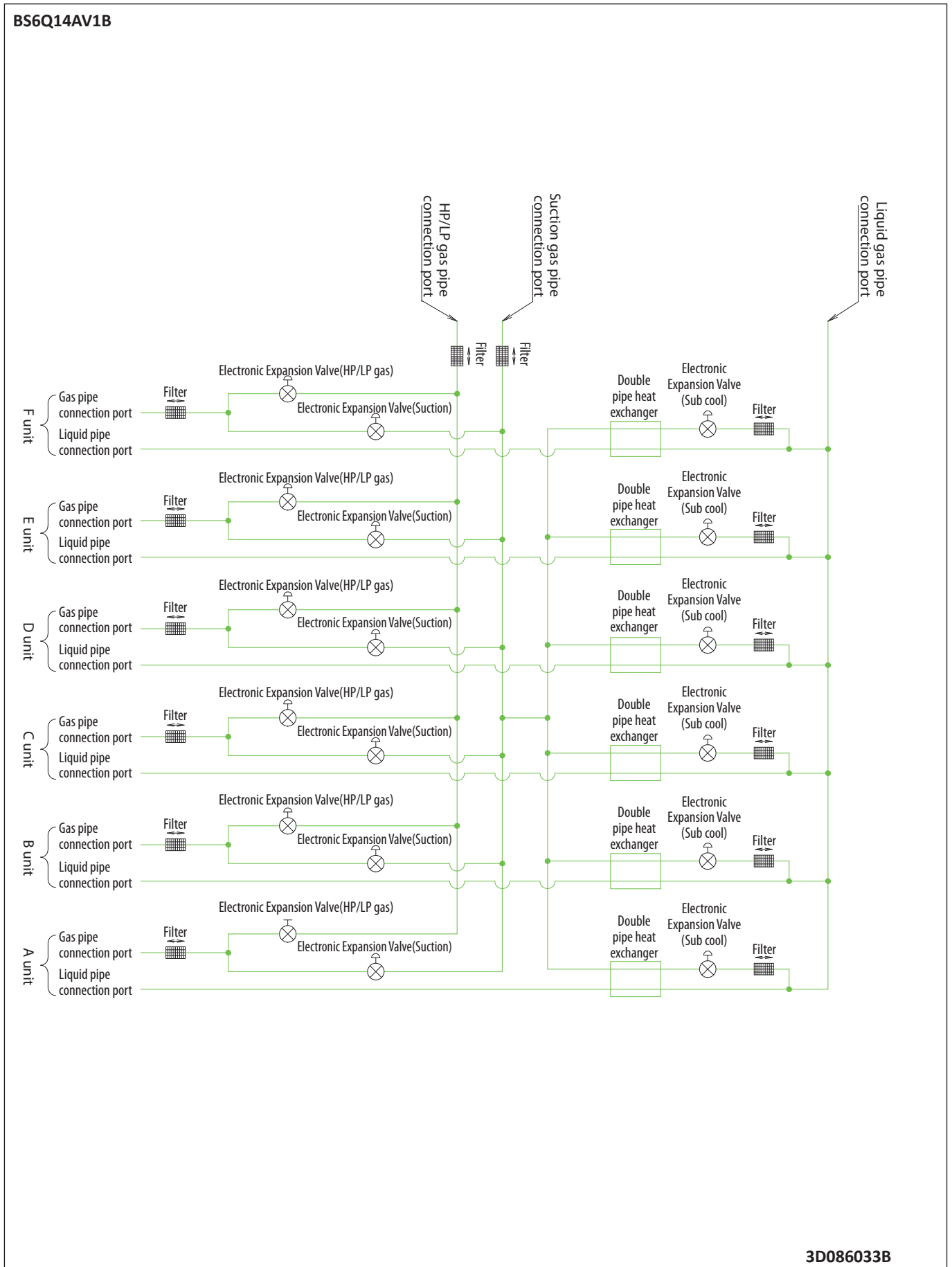


3D086032B



# 7 Piping diagrams

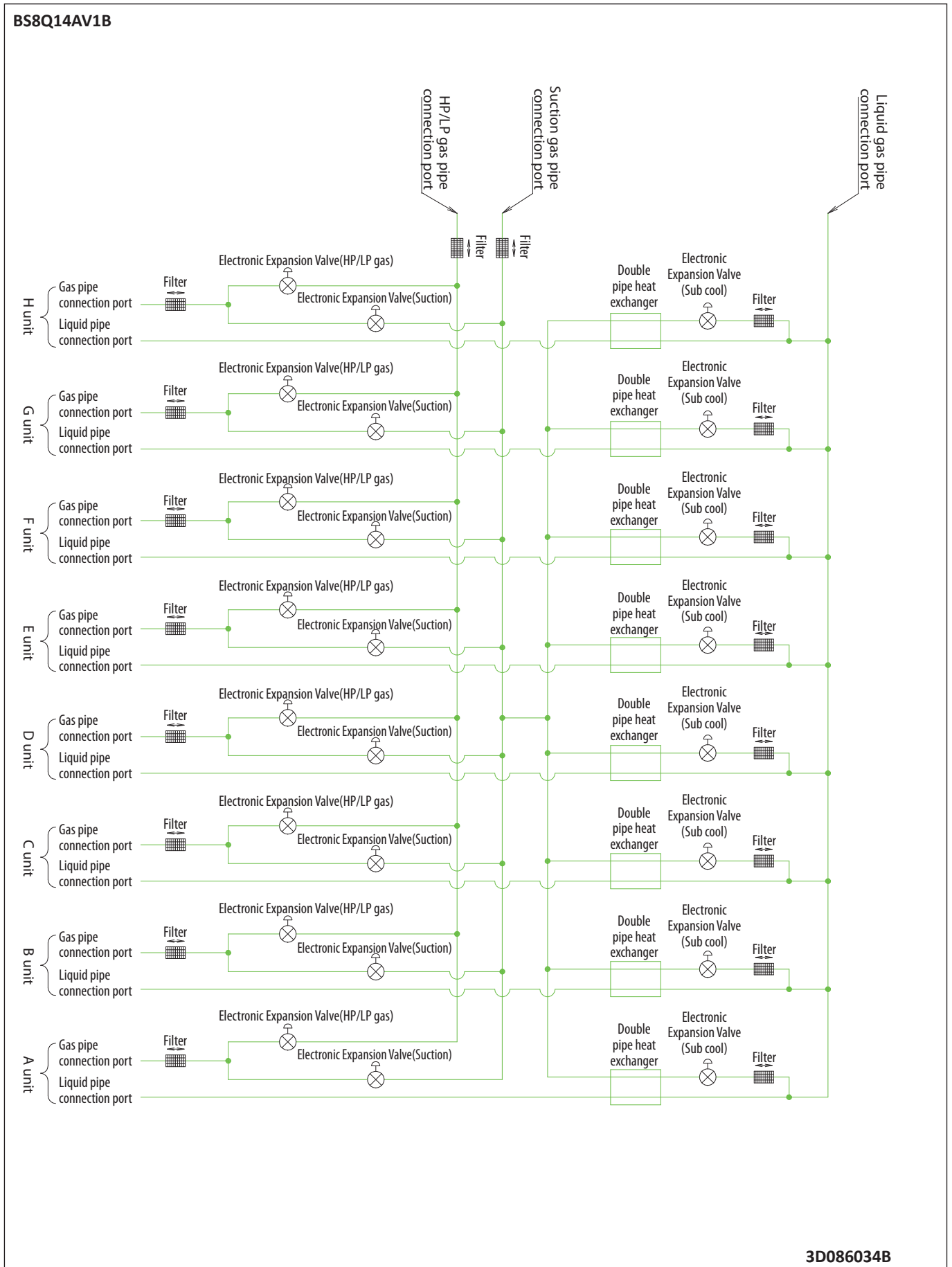
## 7 - 1 Piping Diagrams



# 7 Piping diagrams

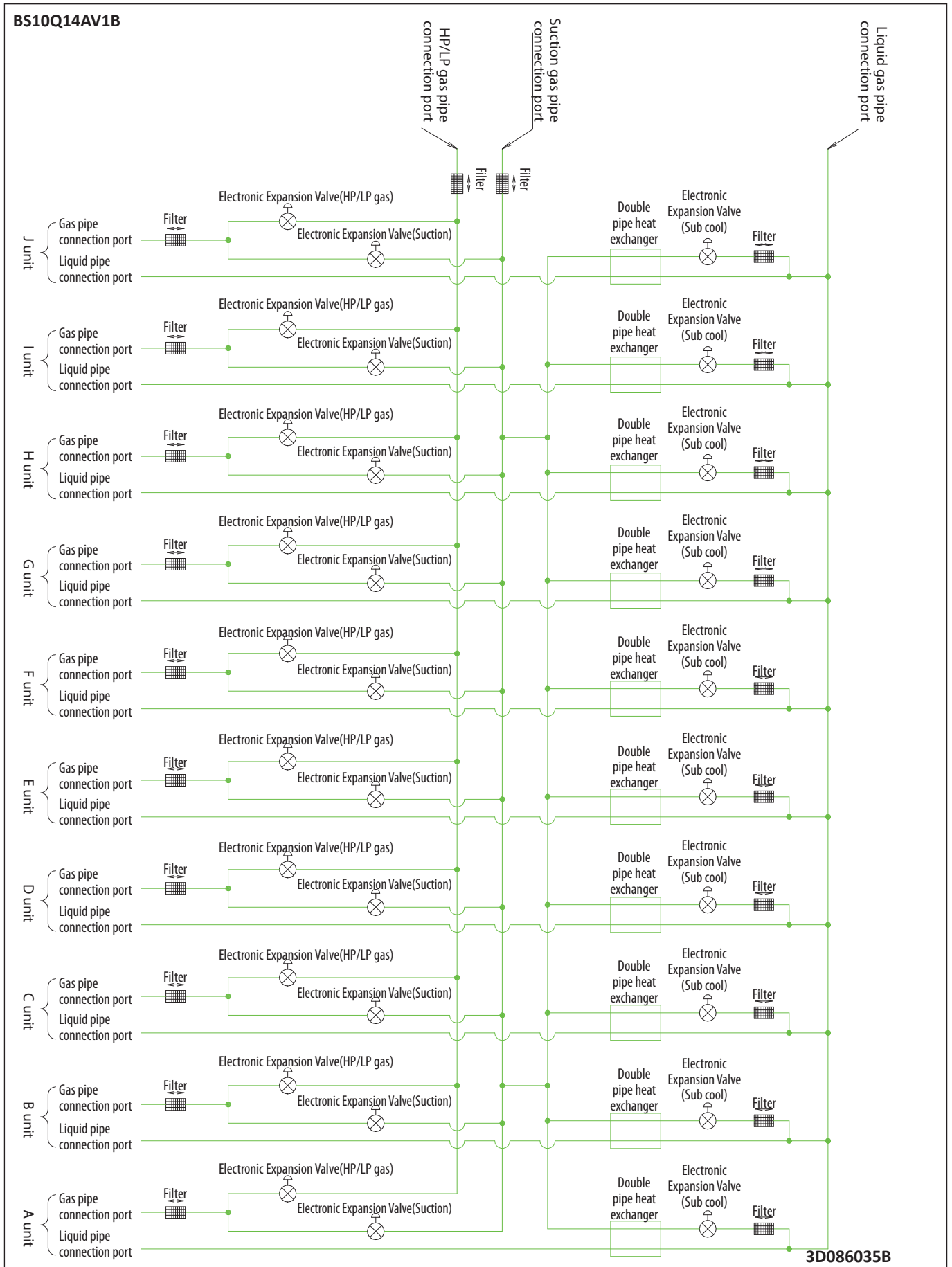
## 7 - 1 Piping Diagrams

7



# 7 Piping diagrams

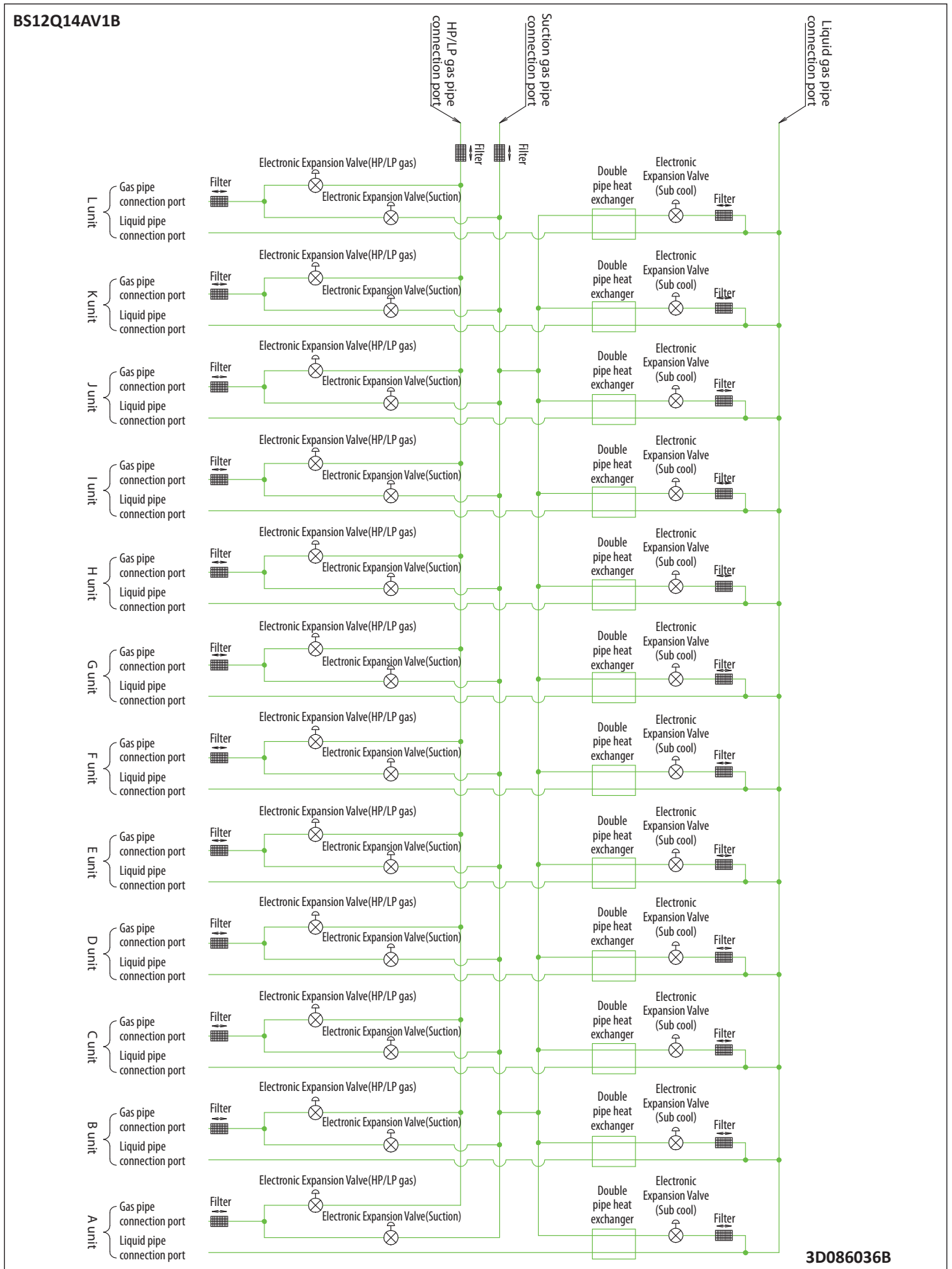
## 7 - 1 Piping Diagrams



# 7 Piping diagrams

## 7 - 1 Piping Diagrams

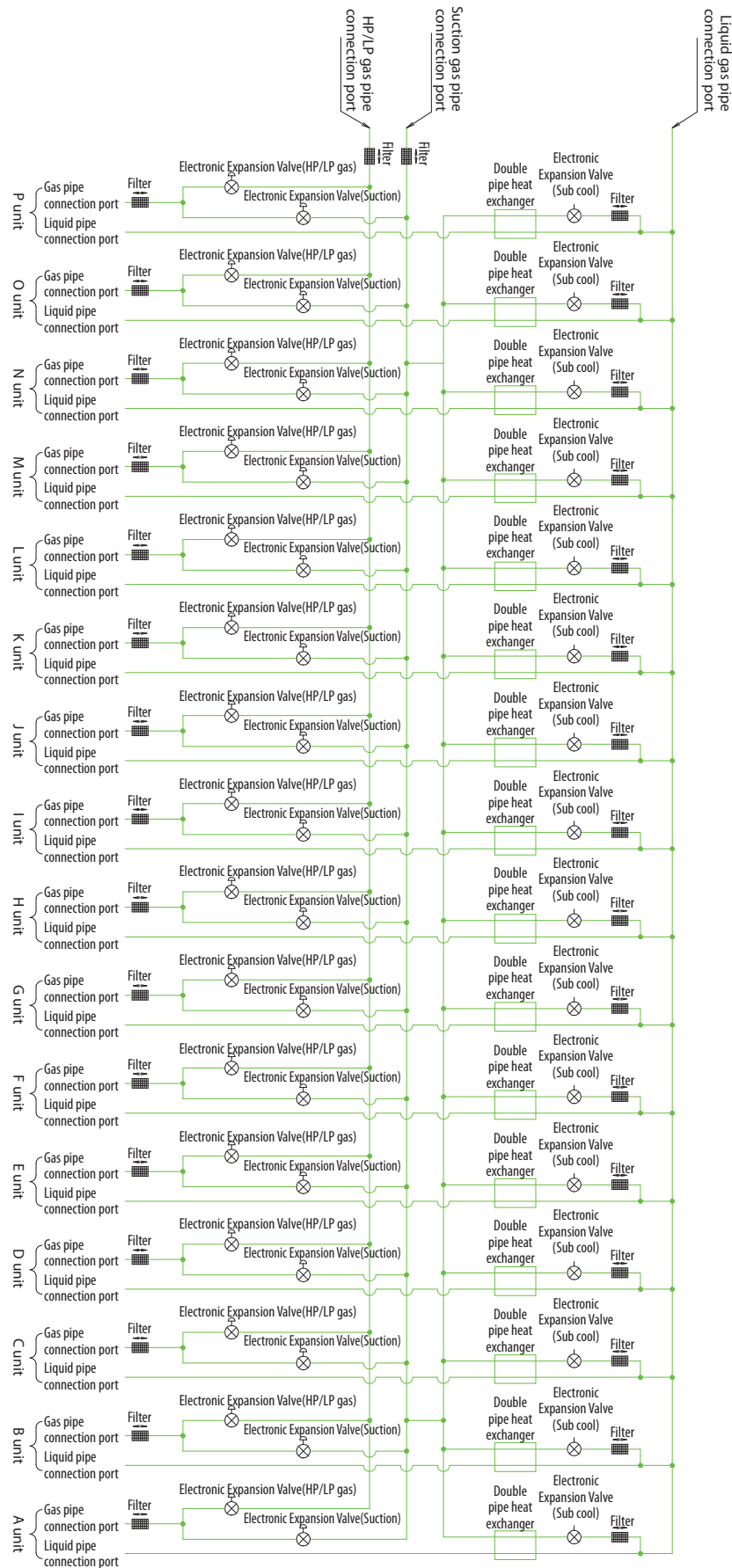
7



# 7 Piping diagrams

## 7 - 1 Piping Diagrams

BS16Q14AV1B

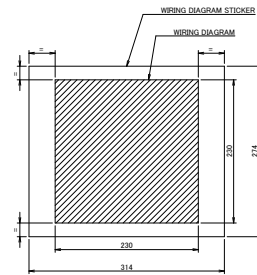
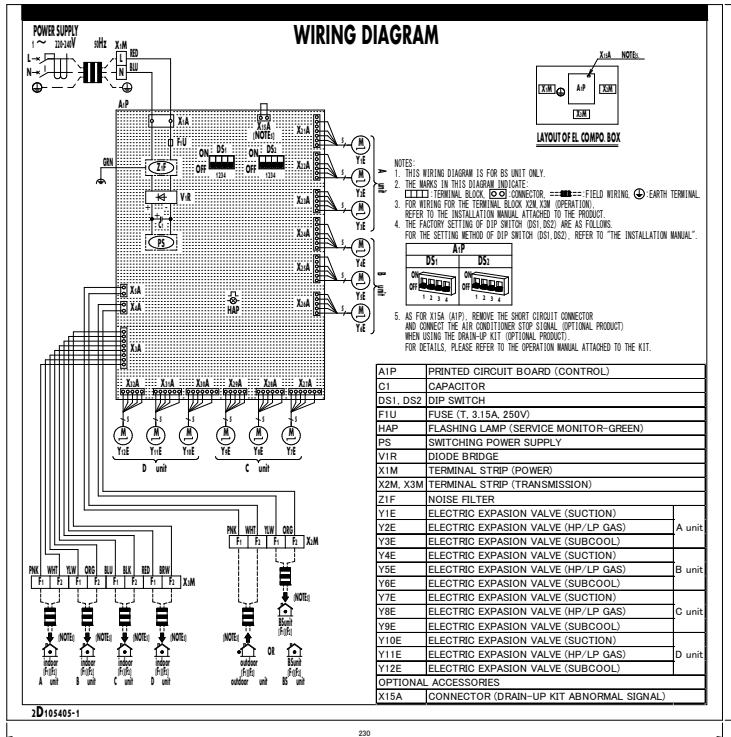


3D086037A

# 8 Wiring diagrams

## 8 - 1 Wiring Diagrams - Single Phase

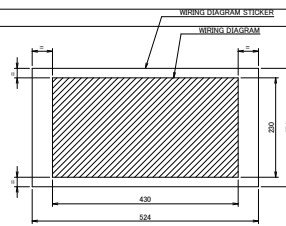
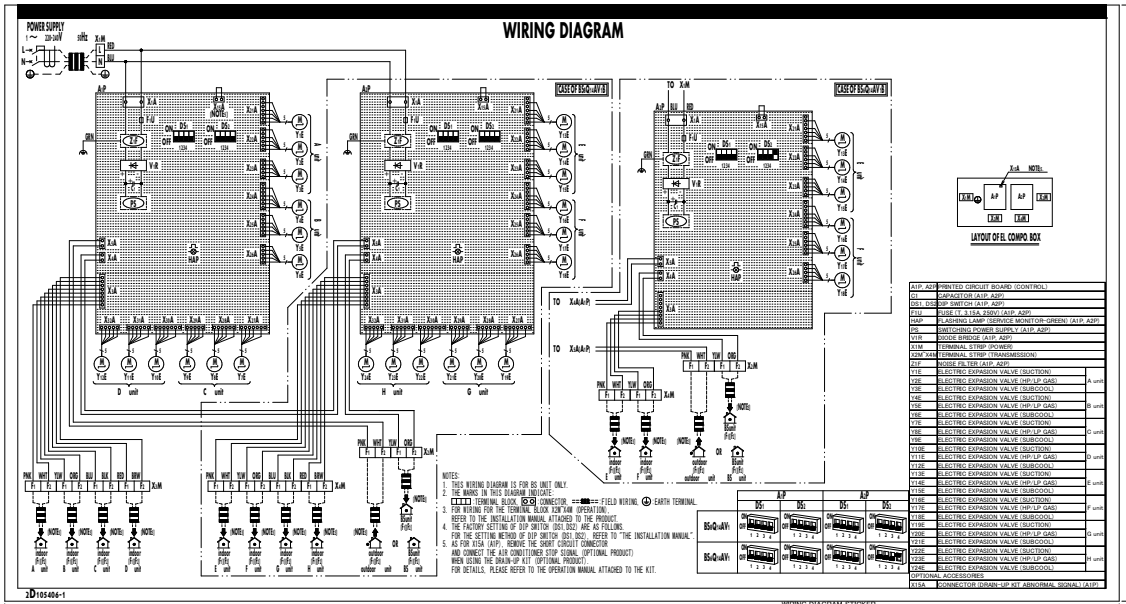
### BS4Q14AV1B



- NOTES:
- LAYOUT AND LETTERSIZE = THIS DRAWING.
  - DO NOT PRINT DIMENSIONS.
  - PRINTING: OFFSET PRINTING BLACK.
  - SLITS: MAKE 2 OR 3 SLITS AT THE REAR SIDE.
  - PRINTING MUST COMPLY TO THE RUBBING TEST OF EN60335-2-40 CLAUSE 7.14.

2D105405

### BS6-8Q14AV1B



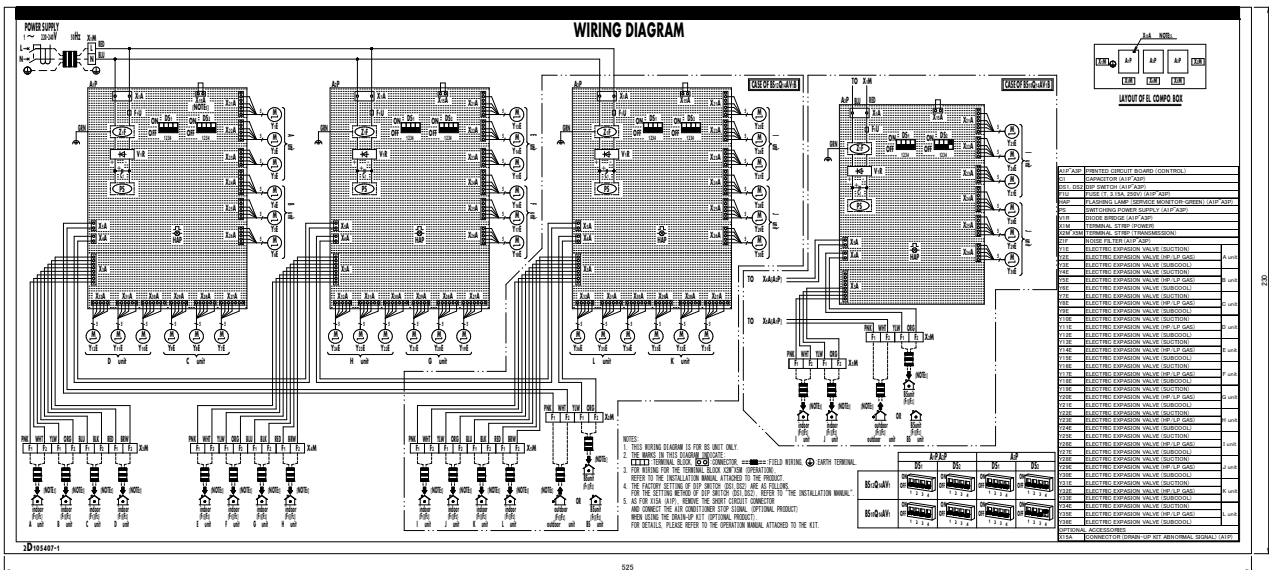
- NOTES:
- LAYOUT AND LETTERSIZE = THIS DRAWING.
  - DO NOT PRINT DIMENSIONS.
  - PRINTING: OFFSET PRINTING BLACK.
  - SLITS: MAKE 2 OR 3 SLITS AT THE REAR SIDE.
  - PRINTING MUST COMPLY TO THE RUBBING TEST OF EN60335-2-40 CLAUSE 7.14.

2D105406

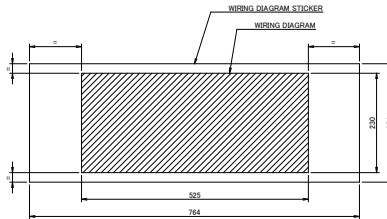
# 8 Wiring diagrams

## 8 - 1 Wiring Diagrams - Single Phase

### BS10-12Q14AV1B

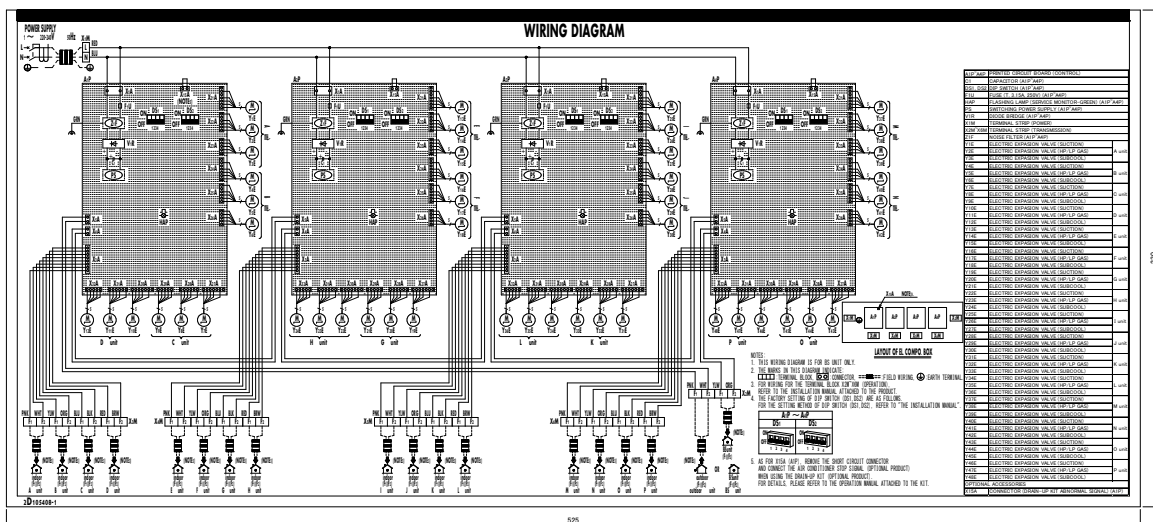


- NOTES:
- LAYOUT AND LETTERSIZE = THIS DRAWING.
  - DO NOT PRINT DIMENSIONS.
  - PRINTING: OFFSET PRINTING BLACK.
  - SLITS: MAKE 2 OR 3 SLITS AT THE REAR SIDE.
  - PRINTING MUST COMPLY TO THE RUBBING TEST OF EN60335-2-40 CLAUSE 7.14.

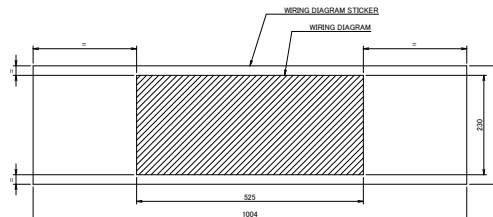


2D105407

### BS16Q14AV1B



- NOTES:
- LAYOUT AND LETTERSIZE = THIS DRAWING.
  - DO NOT PRINT DIMENSIONS.
  - PRINTING: OFFSET PRINTING BLACK.
  - SLITS: MAKE 2 OR 3 SLITS AT THE REAR SIDE.
  - PRINTING MUST COMPLY TO THE RUBBING TEST OF EN60335-2-40 CLAUSE 7.14.



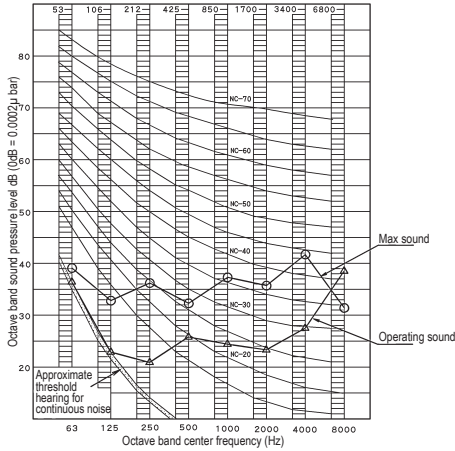
2D105408

# 9 Sound data

## 9 - 1 Sound Pressure Spectrum

9

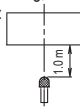
### BS4Q14AV1B



**NOTES**

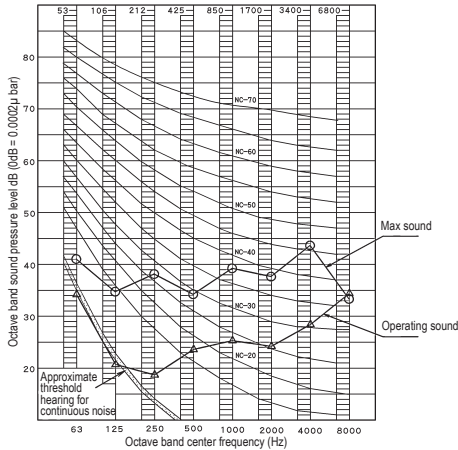
Scale	Operating sound	Max sound
A	38	45
C	39	46

- Over All (dB):  
The operated sound is measured when the indoor units are connected to all the branches.
- Operating conditions:  
Power source: 220-240V 50Hz
- Measuring place: Anechoic chamber (conversion value)
- The operating sound is measured in anechoic chamber, if it is measured under the actual installation conditions, it is normally over the set value due to environmental noise and sound reflection.
- Even if the indoor unit to be connected downstream of BS unit has stopped, when the system is operating, operation sound can be heard.
- The maximum sound is max value of transient sound, such as oil return and defrost, the change of cooling and heating, etc.
- Location of microphone:



4D087632A

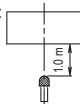
### BS6-8Q14AV1B



**NOTES**

Scale	Operating sound	Max sound
A	39	47
C	39	48

- Over All (dB):  
The operated sound is measured when the indoor units are connected to all the branches.
- Operating conditions:  
Power source: 220-240V 50Hz
- Measuring place: Anechoic chamber (conversion value)
- The operating sound is measured in anechoic chamber, if it is measured under the actual installation conditions, it is normally over the set value due to environmental noise and sound reflection.
- Even if the indoor unit to be connected downstream of BS unit has stopped, when the system is operating, operation sound can be heard.
- The maximum sound is max value of transient sound, such as oil return and defrost, the change of cooling and heating, etc.
- Location of microphone:



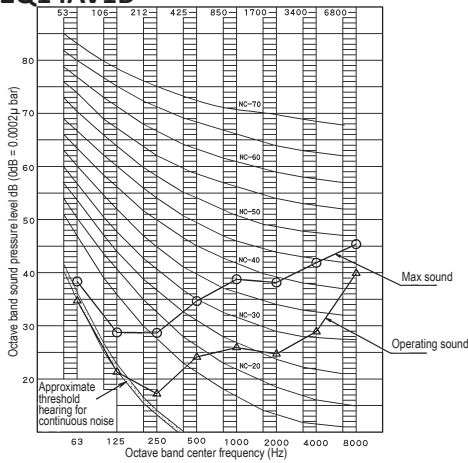
4D087633A



# 9 Sound data

## 9 - 1 Sound Pressure Spectrum

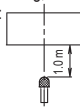
### BS10-12Q14AV1B



**NOTES**

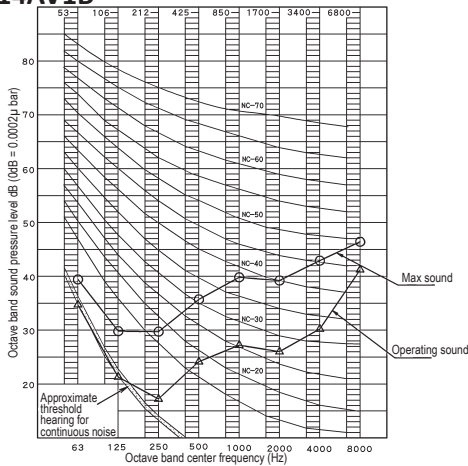
Scale	Operating sound	Max sound
A	40	48
C	40	48

- Over All (dB):  
The operated sound is measured when the indoor units are connected to all the branches.
- Operating conditions:  
Power source: 220-240V 50Hz
- Measuring place: Anechoic chamber (conversion value)
- The operating sound is measured in anechoic chamber, if it is measured under the actual installation conditions, it is normally over the set value due to environmental noise and sound reflection.
- Even if the indoor unit to be connected downstream of BS unit has stopped, when the system is operating, operation sound can be heard.
- The maximum sound is max value of transient sound, such as oil return and defrost, the change of cooling and heating, etc.
- Location of microphone:



4D087634A

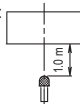
### BS16Q14AV1B



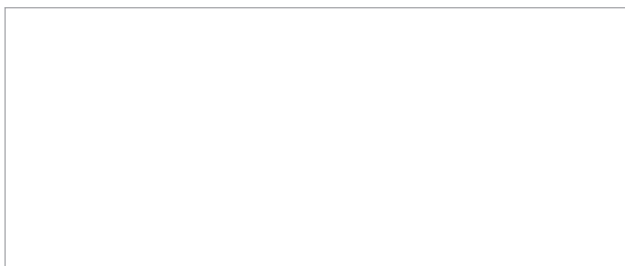
**NOTES**

Scale	Operating sound	Max sound
A	41	49
C	41	49

- Over All (dB):  
The operated sound is measured when the indoor units are connected to all the branches.
- Operating conditions:  
Power source: 220-240V 50Hz
- Measuring place: Anechoic chamber (conversion value)
- The operating sound is measured in anechoic chamber, if it is measured under the actual installation conditions, it is normally over the set value due to environmental noise and sound reflection.
- Even if the indoor unit to be connected downstream of BS unit has stopped, when the system is operating, operation sound can be heard.
- The maximum sound is max value of transient sound, such as oil return and defrost, the change of cooling and heating, etc.
- Location of microphone:



4D087635A



EEEDEN22

10/2022



The present leaflet is drawn up by way of information only and does not constitute an offer binding upon Daikin Europe N.V. Daikin Europe N.V. has compiled the content of this leaflet to the best of its knowledge. No express or implied warranty is given for the completeness, accuracy, reliability or fitness for particular purpose of its content and the products and services presented therein. Specifications are subject to change without prior notice. Daikin Europe N.V. explicitly rejects any liability for any direct or indirect damage, in the broadest sense, arising from or related to the use and/or interpretation of this leaflet. All content is copyrighted by Daikin Europe N.V.